

# SKY HIGH NORTHERN IRELAND

## AN AERIAL JOURNEY

Skyworks

Northern Ireland's six counties (Antrim, Derry, Tyrone, Fermanagh, Armagh and Down) offer some spectacular scenery. Its sea coast, particularly the Causeway Coast of North Antrim, with the world-famous Giant's Causeway at its centre, is among the most attractive in the British Isles. Elsewhere, the Mountains of Mourne, the great loughs which are such a feature of the Province, country houses like Mount Stewart in County Down, castles, monasteries and ancient sites, all combine to place Northern Ireland among the most beautifully varied parts of Western Europe.

And yet this corner of Ireland was the only part of the island to experience the full impact of the Industrial Revolution and the great city of Belfast thrived as a powerhouse of manufacturing and shipbuilding. The shipyards of Harland and Wolff, for example, built a whole succession of enormous vessels, notably the Titanic. This prosperity was, in turn, reflected in the city's grand public buildings and monuments, which give Belfast appropriate dignity as a capital, including the imposing City Hall and the parliament building at Stormont.

Seen from above, Northern Ireland's many glories are revealed in fascinating detail – its gentle hills, dramatic cliffs, ancient towns and vibrant industry, where the mystic past mixes with the absolutely contemporary to produce a remarkably diverse and endlessly fascinating landscape.

### ABOUT THE AUTHOR

Skyworks is an independent production company specialising in top-end High Definition aerial filming. The company has become one of the world's leading HD aerial archivers. On the television side, Skyworks produces a range of factual programmes, varying from series about history, landscape and heritage to observational documentaries.

### HALSGROVE CATALOGUE

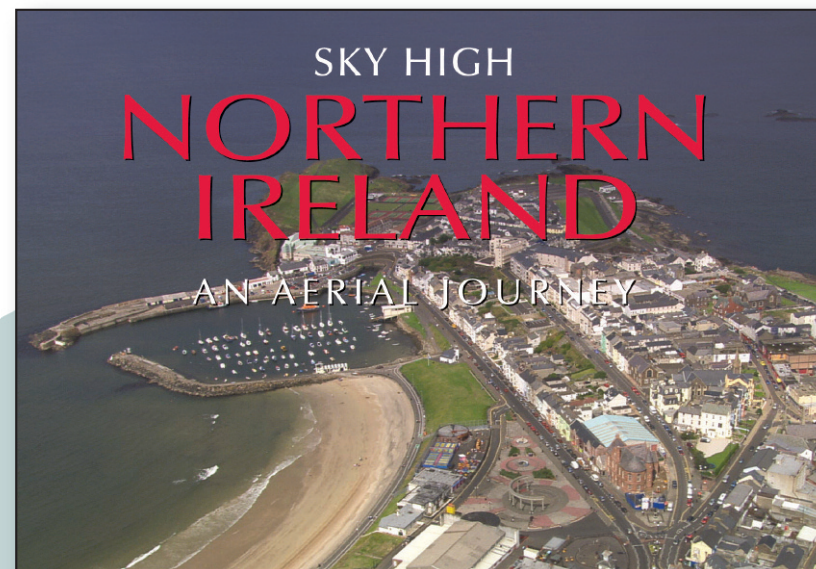
The full Halsgrove catalogue is available free or visit [www.halsgrove.com](http://www.halsgrove.com) for regional and category listings of available titles.

#### Trade sales:

Helen Deakin – DDI 01823 653772  
[helend@halsgrove.com](mailto:helend@halsgrove.com)

Halsgrove Publishing  
Halsgrove House,  
Ryelands Industrial Estate,  
Bagley Road, Wellington,  
Somerset TA21 9PZ  
Tel: 01823 653777  
Fax: 01823 216796  
[www.halsgrove.com](http://www.halsgrove.com)  
e-mail: [sales@halsgrove.com](mailto:sales@halsgrove.com)

## HALSGROVE TITLE INFORMATION



**Format:** Hardback with colour cover, 64pp, 110x155mm, illustrated in colour throughout  
**Price:** £4.99  
**ISBN:** 978 1 906887 42 1  
**Imprint:** PiXZ Books  
**Published:** July 2009

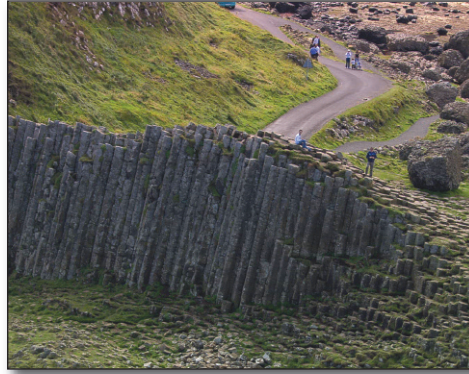


# Great Books from your Local Bookseller





The Red Hand of Ulster in the world-famous gardens at Mount Stewart, created in the 1920s.



The Giant's Causeway consists of around 37,000 basalt columns, most of them hexagonal.



The Beaghmore stone circles, which were possibly a prehistoric observatory, date from between 2000 and 1200 BC.



The River Foyle curves through the city of Derry.



Queen's University, Belfast, the Province's most prestigious seat of learning. The main building dates from 1849.



Belfast City Hall in Donegall Square emerges from behind tall modern buildings.



Dunluce Castle, dating back to the fourteenth century, was the seat of the MacDonnells, chiefs of Antrim.



Strangford Lough is a sea lough, being connected to the Irish Sea by the Narrows.

Example of a double-page spread.